



Marie Skłodowska- Curie RISE  
MAPS-LED  
Multidisciplinary Approach to Plan Smart Specialisation Strategies  
for Local Economic Development



**Fo.Cu.S. Centre Research Unit  
'Sapienza' University of Rome**



**Cultural interests, main goal & team composition**

*MAPS-LED First Mid-term Meeting 06/07.06.2016*  
**Northeastern University of Boston (MA), USA**  
**Department of Economics**

MAPS-LED “Multidisciplinary Approach to Plan Smart Specialisation Strategies for Local Economic Development” is a Marie Skłodowska-Curie RISE research project funded by the European Union’s HORIZON 2020 program for Research and Innovation under the Grant Agreement 645651

DISCLAIMER: The information appearing in this document has been prepared in good faith and represents the opinions of the authors. The authors are solely responsible for this publication and it does not represent the opinion of the European Commission or its Research Executive Agency. Neither the authors nor the European Commission or its Research Executive Agency are responsible or any use that might be made of data including opinions appearing herein.



Marie Skłodowska- Curie RISE  
MAPS-LED  
Multidisciplinary Approach to Plan Smart Specialisation Strategies  
for Local Economic Development

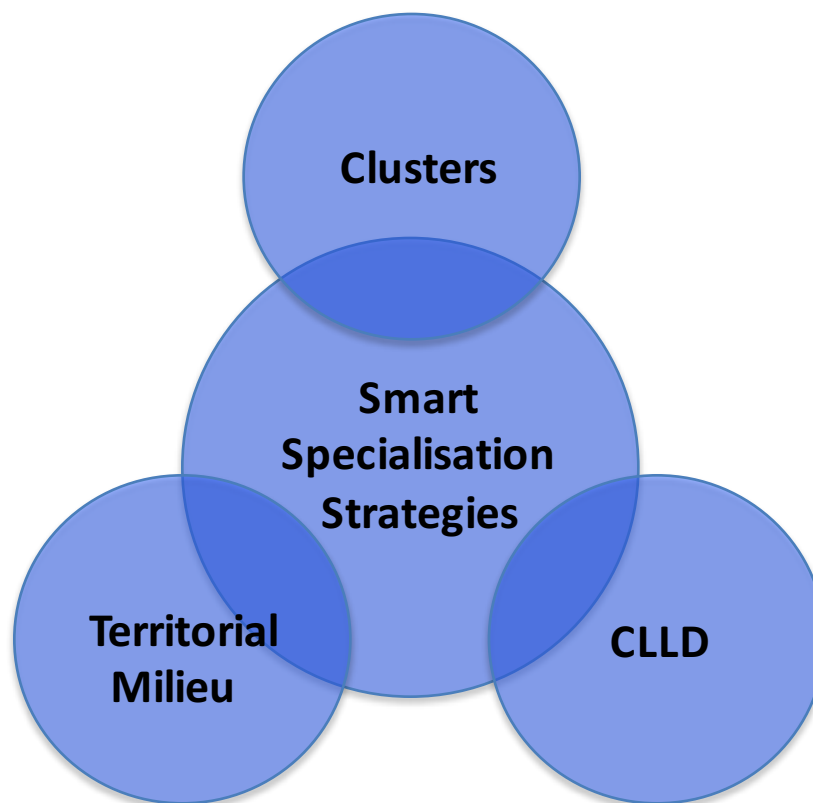


## Short Outline

- 1. Research project complexity and relationship with Fo.Cu.S. institutional mission**
- 2. Main goal and specific targets of Fo.Cu.S. unit in the MAPS-LED project**
- 3. Presentation of our team**

## 1. Research complexity and relationship with Fo.Cu.S. institutional mission

# MAPS-LED: challenging the complexity



## 1. Research complexity and relationship with Fo.Cu.S. institutional mission

# MAPS-LED: connections with Fo.Cu.S. interest

**Fo.Cu.S.**

*web.uniroma1.it/focus*



[ acronym of **T**raini**n**g (**F**ormazione), **C**ulture (**C**ultura), **H**istory (**S**toria) ]

Inter-departmental Research Centre of 'Sapienza', University of Rome.

**General Mission:** Urban and Regional Studies (integrated competences)

**Specific interest:** Regeneration of small historical towns through an integrated, 'Place based' and Community-led approach

## 2. Main goal and specific targets of Fo.Cu.S. unit in MAPS-LED

### **Fo.Cu.S. in MAPS-LED: main goal**

Exploration and application of RIS3 principles to the EU regional context through some privileged interpretation keys:

- 'Place-based' dimension and local cultural legacy
- 'Community Led Local Development' approach
- Role of networks as 'cohesion vectors' (physical mobility, production/knowledge/institution connections and other actors' relationships)

## 2. Main goal and specific targets of Fo.Cu.S. unit in MAPS-LED

### **Fo.Cu.S. in MAPS-LED: specific targets**

RIS3 model(s) and US Cluster system findings (Boston and San Diego case-studies) to be decrypted and virtuously implemented, in particular within some specific Italian domains:

- Lazio Region (Rome Metropolitan Area)
- Marche Region (Inland polycentric areas)

### 3. Presentation of the team

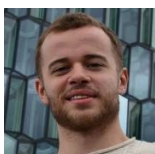
## The Fo.Cu.S. Unit for MAPS-LED: ESRs



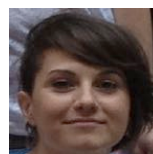
**Leonardo BIANCHI** °



**Nicole DEL RE** \*



**Andrea SIMONE** °



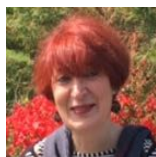
**Almona TANI** °

\* PhD Economic Geography; Dept. MEMOTEF, 'Sapienza' University of Rome

° PhD Urban and Regional Planning; Dept. PDTA, 'Sapienza' University of Rome

### 3. Presentation of the team

## The Fo.Cu.S. Unit for MAPS-LED: ERs



**Claudia MATTOGNO ^**



**Michele TALIA °**



**Bruno MONARDO \***



**Antonio CAPPUCCHETTI ^**

^ Dept. DICEA, 'Sapienza' University of Rome, Focus Director

\* Dept. PDTA, 'Sapienza' University of Rome

° School Architecture & Design, University of Camerino



### 3. Presentation of the team

## The Fo.Cu.S. Unit for MAPS-LED: ERs



**Filippo CELATA** §



**Giuseppe CROCE** \$



**Cary HENDRICKSON** §



**Saverio MICCOLI** ^



**Anna Laura PALAZZO** °



**Barbara PIZZO** \*



**Venere Stefania SANNA** §

^ Dept. DICEA, 'Sapienza' University of Rome

\$ Dept. Economics, 'Sapienza' University of Rome

§ Dept. MEMOTEF, 'Sapienza' University of Rome

\* Dept. PDTA, 'Sapienza' University of Rome

° Dept. Architecture, University of Roma TRE



Marie Skłodowska- Curie RISE  
MAPS-LED  
Multidisciplinary Approach to Plan Smart Specialisation Strategies  
for Local Economic Development



Fo.Cu.S. Centre Research Unit  
'Sapienza' University of Rome



**Thank you  
for your attention!**

## Fo.Cu.S. 'Sapienza' University of Rome

### Secondments (months, ESRs + ERs)

	WP1	WP2	WP3	WP4	Total
<b>MAPS-LED</b>					
<b>Grant Agreement 2015</b>	<b>8</b>	<b>32</b>	<b>28</b>	<b>4</b>	<b>72</b>
<b>Management Plan</b>					
<b>03-31-2016</b>	<b>11,99</b>	<b>18</b>	<b>16</b>	<b>26,01</b>	<b>72</b>
<b>Adjustment</b>					
<b>(06-06-2016)</b>	<b>11,26</b>	<b>18,4</b>	<b>17,5</b>	<b>24,84</b>	<b>72</b>