



SAN DIEGO STATE
UNIVERSITY

Commercial Local Urban District Project

July 5



**Institute of Public
and Urban Affairs**

Multi-Disciplinary Work

School of Public Affairs



- ⑩ School of Public Affairs
 - ⑩ City Planning
 - ⑩ MCP
 - ⑩ Planners, geographers....
 - ⑩ Criminal Justice
 - ⑩ Undergraduate and Graduate programs
 - ⑩ Sociologists, Criminal Justice
 - ⑩ Public Administration
 - ⑩ Undergraduate and Graduate Program
 - ⑩ Economists, political scientists, public administrators
- ⑩ The Institute of Public and Urban Affairs
 - ⑩ Attract practitioners and researchers
- ⑩ The Combination of the different programs and IPUA provide the School of Public Affairs with additional lenses to tackle the issues of Urban Regeneration

School of Public Affairs

School of Public Affairs



- ⑩ Access to courses dealing with:
 - ⑩ Planning process
 - ⑩ GIS
 - ⑩ Urban design and land planning use
 - ⑩ Housing and housing policy
 - ⑩ Land use and environmental law
 - ⑩ Urban transportation and planning
 - ⑩ The metropolitan area
 - ⑩ Comparative public administration
 - ⑩ Administration and public policy development
 - ⑩ Administrative Theory
 - ⑩ Crime and Behavior
 - ⑩ Community resources in criminal justice

- ⑩ Connections build with Southern California public agencies and local governments

School of Public Affairs



International Expertise

- ⑩ The presence of an international group of researchers:
- ⑩ Professors in City Planning have done Research in the following countries (a selection of countries and regions are presented here):
 - ⑩ Italy, South America, USA, Ireland, Eastern Europe
- ⑩ Professors in Criminal Justice also researched the following countries:
 - ⑩ Nigeria, UK
- ⑩ Professors of Public Administrations conducted research in the following countries:
 - ⑩ Bosnia, Lebanon, Jordan, Sri Lanka, Morocco, Mexico

San Diego Urban Regeneration



⑩ CCDC: Center City Development Corporation

⑩ www.ccdc.com

⑩ was established in 1975 by the City Council to carry out redevelopment activities in Downtown San Diego. CCDC has a seven-member board of directors and a staff to implement programs in its Project Areas comprising approximately 1,490 acres.

⑩ The City of San Diego

⑩ www.sandiego.gov/redevelopmentagency/projarea.shtml

⑩ administers an affordable housing program and 11 of the Redevelopment Agency's 14 Project Areas, encompassing approximately 7,613 acres

⑩ Southeastern Economic Development Corporation

⑩ www.sedcinc.org

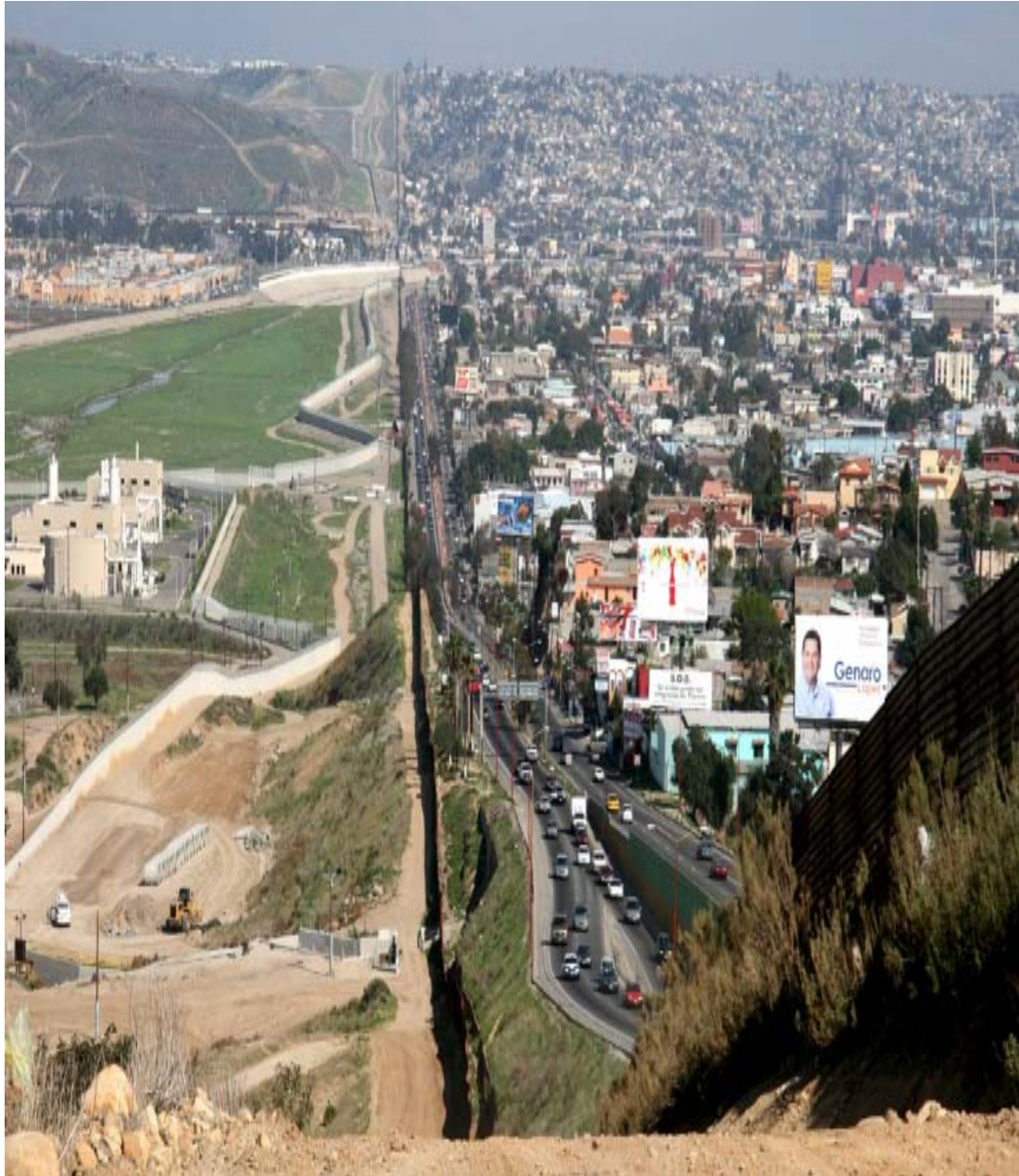
⑩ was established by the City Council in 1981 to carry out redevelopment in southeastern San Diego. SEDC has a nine-member board of directors and a staff to implement programs in its Project Area that comprises of approximately 1,055 acres

San Diego



- ⑩ New look at community gardens
 - ⑩ Trying to increase access to gardens
- ⑩ New look at larger retail stores in the city
 - ⑩ More competition from large store like Super Wal-Mart or Super Target to smaller businesses
- ⑩ Economic Development at the core of redevelopment

International Borders



- ⑩ Southern neighbor:
 - ⑩ Mexico
 - ⑩ Trade
 - ⑩ Immigration
 - ⑩ Cultural transfer
- ⑩ New Public Housing Project in Tijuana
 - ⑩ Potential for experimentation



Thank You